



8131 W KLAMATH CT

Suite B, Kennewick WA
MLS # 235587

Contact

Kirt Shaffer | 509.521.9183
kirt@tippettcompany.com

SUMMARY

This turn-key suite is located in the Crest Building, which is situated in the Grandridge Business Park (GBP). The GBP is located nicely within the Tri-Cities Central Business District.

The Crest Building is a multi-tenant office building whose tenants include:

- Social Security Administration
- Hatfield Law
- Elite Chiropractic & Massage

The GBP includes other buildings which accommodate many other tenants including corporate offices, state agencies, and professional services.

ZONING

Commercial Regional

TAX PARCEL

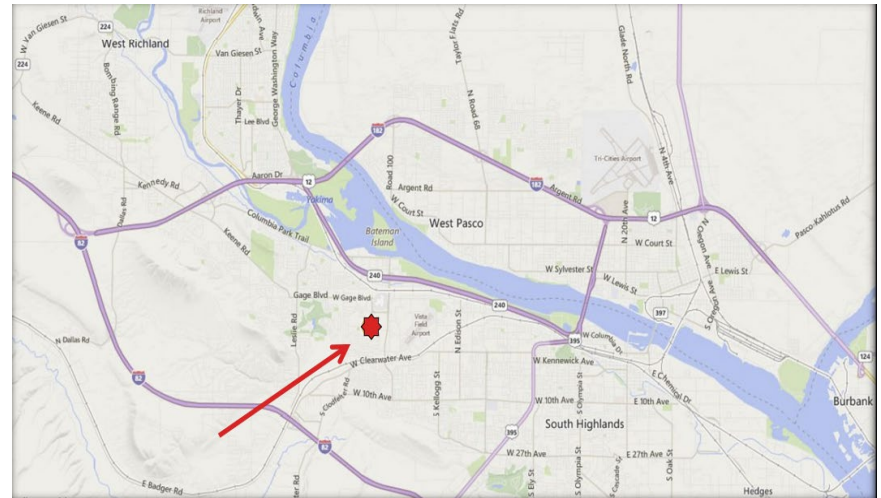
1-3199-401-3034-007
±1.60 Acres

FOR LEASE

Suite B:
\$17.00/SF + NNN \$6.66/SF
±1,108.58 RSF/928.95 USF

ADDRESS

8131 W Klamath Ct, Suite B, Kennewick, WA 99336



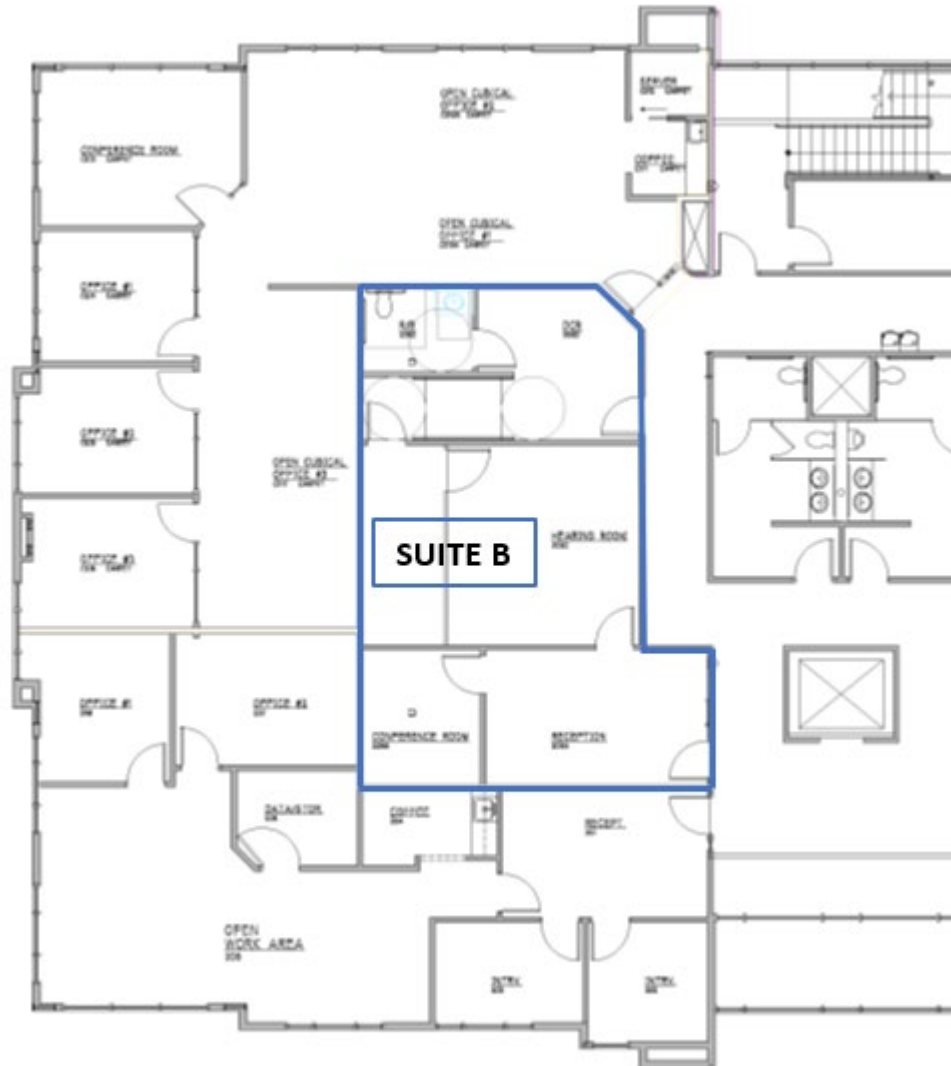
CONTACT

Tippett Company
2815 St. Andrews Loop
Suite F
Pasco WA 99301

O: 509.545.3355
F: 509.545.1689

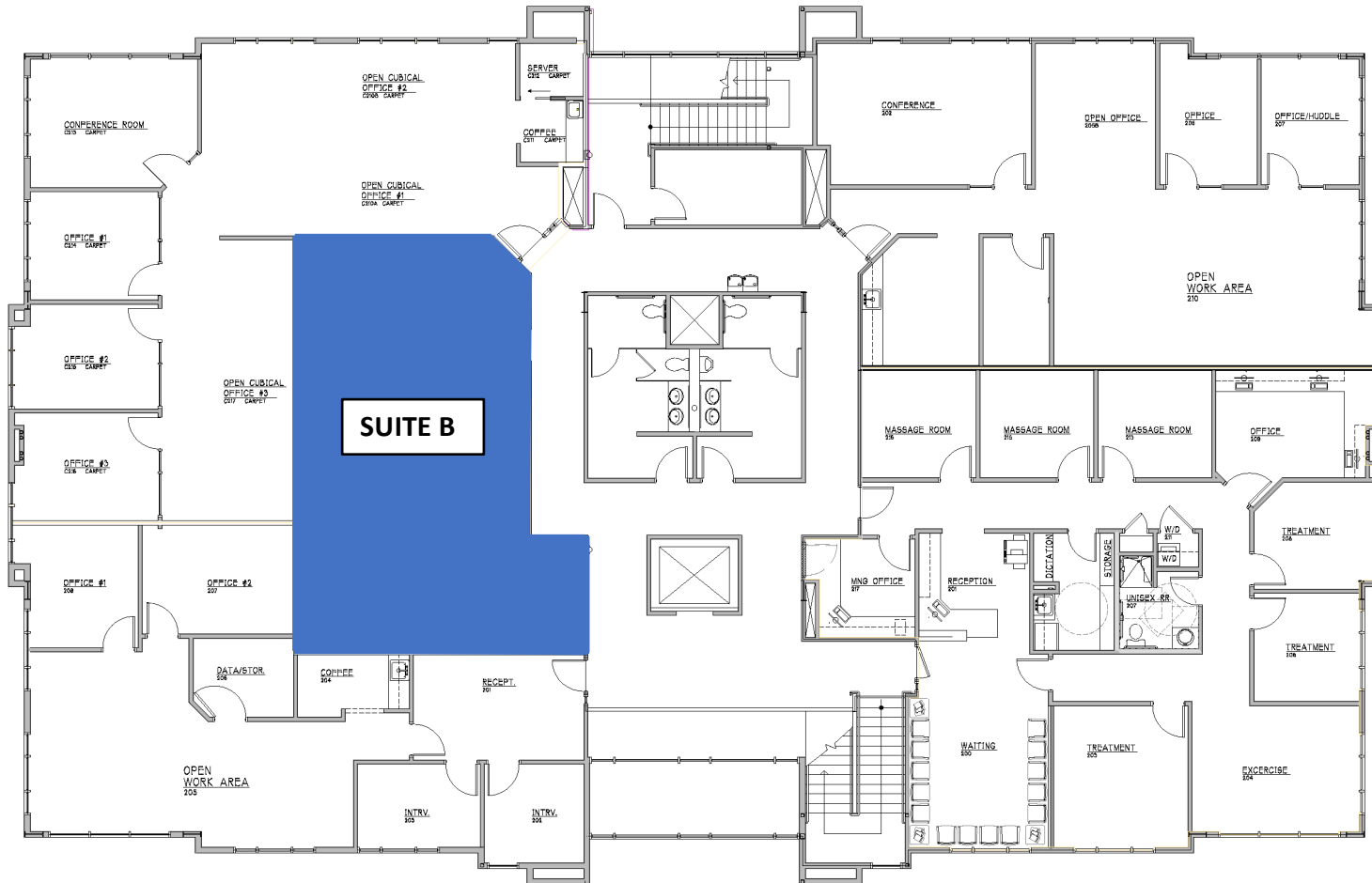
www.tippettcompany.com

FLOOR PLAN



No warranty or representation, expressed or implied, is made as to the accuracy of information contained herein, and same is submitted subject to errors, omission, change of price, rental or other conditions and withdrawal without notice. Purchaser and his/her agent are responsible for independently verifying all presented information.

FLOOR PLAN



SECOND FLOOR PLAN
1/4" = 1'-0" 52765X_FP2

AERIAL VIEW



No warranty or representation, expressed or implied, is made as to the accuracy of information contained herein, and same is submitted subject to errors, omission, change of price, rental or other conditions and withdrawal without notice. Purchaser and his/her agent are responsible for independently verifying all presented information.