



Paradise Bottled Water

6202 W. Deschutes Ave.

Kennewick, WA 99336
MLS 288935 & 288937

Contacts

Kirt Shaffer | 509.521.9183
kirt@tippettcompany.com
DJ Talarico | 509.951.3873
djtalarico@tworld.com



SUMMARY

This offering is a part of a package sale including both the real estate featured in this material in addition to the current business, Paradise Bottled Water, occupying this property.

The real estate includes two buildings situated on ± one acre and located in a vibrant area of Kennewick, WA

The retail/office/warehouse building includes a reception area with multiple offices and a break room at the front of the building with a warehouse production area in the back of the building.

This building also has mezzanine space above the office area.

The secondary warehouse building is a pre-engineered metal building designed for storage.

PRICE

\$2,825,000

Price Breakdown:

Real Estate	\$1,850,000
Business	\$ 975,000

Retail/Office	3,968
Warehouse	4,000
Storage Building	<u>1,500</u>

TOTAL 9,468 SF

CONTACTS

Kirt Shaffer

Office 509.545.3355

Mobile 509.521.9183

kirt@tippettcompany.com

2815 St, Andrews Loop, Suite F

Pasco, WA 99301

DJ Talarico

Office 509.394.4150

Mobile 509.951.3873

djtalarico@tworld.com

1722 E Sprague Ave, Ste 219

Spokane, WA 99202

ZONING

Industrial Light (IL)

UTILITIES

Power: Benton PUD

Water: City of Kennewick

Sewer: City of Kennewick

Gas: Cascade Natural Gas

Internet: Multiple Providers

TRAFFIC COUNTS (CBA)

14,701 ADT

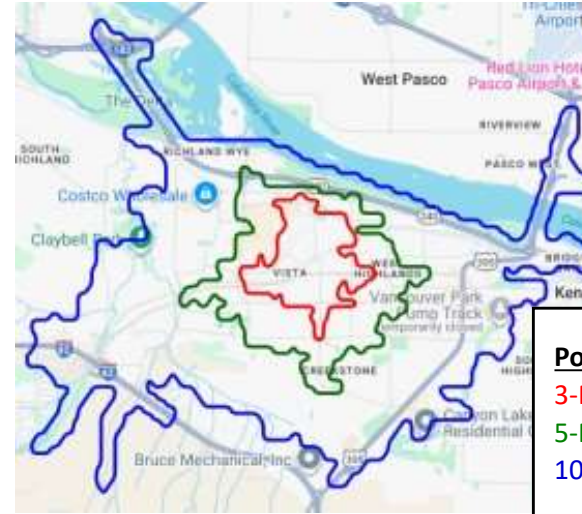
ADDRESS

6202 W. Deschutes Ave.
Kennewick, WA 99336

TAX PARCEL

132994000001023

DEMOGRAPHICS (CBA)



Population

3-Minutes	4,461
5-Minutes	19,700
10-Minutes	59,590

Avg. Household Income

3-Minutes	\$61,498
5-Minutes	\$65,241
10-Minutes	\$65,294

LINKS

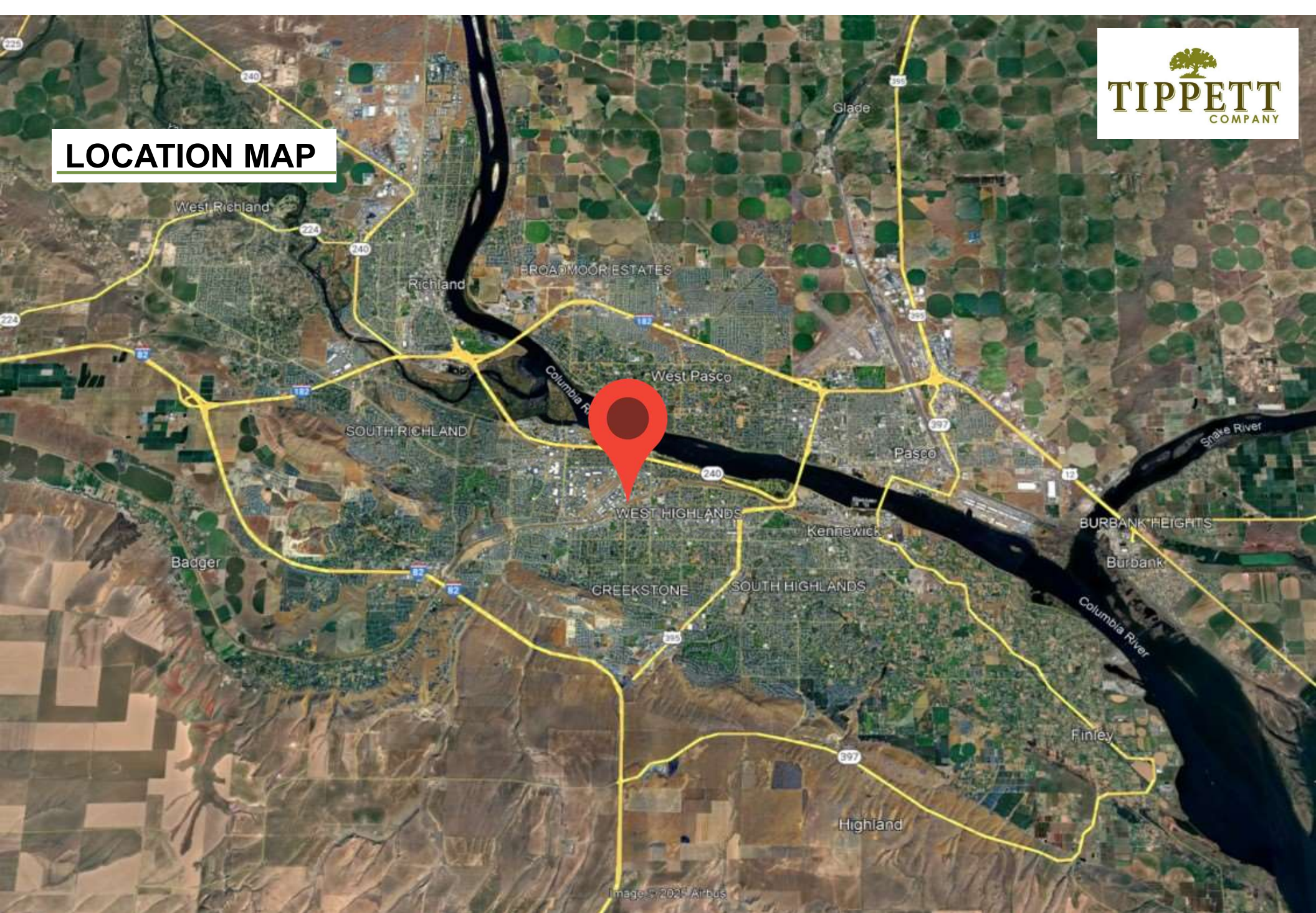
Municipal

<https://www.go2kennewick.com/>
<https://www.co.benton.wa.us/>

Economic Development

<https://portofbenton.com/>
<https://www.tridec.org/>

LOCATION MAP



No warranty or representation, expressed or implied, is made as to the accuracy of information contained herein, and same is submitted subject to errors, omission, change of price, rental or other conditions and withdrawal without notice. Purchaser and his/her agent are responsible for independently verifying all presented information.

AERIAL VIEW

No warranty or representation, expressed or implied, is made as to the accuracy of information contained herein, and same is submitted subject to errors, omission, change of price, rental or other conditions and withdrawal without notice. Purchaser and his/her agent are responsible for independently verifying all presented information.

DEMOGRAPHICS (list source here)

CITY, STATE
Kennewick, WA

POPULATION
59,590

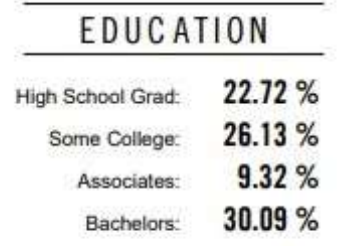
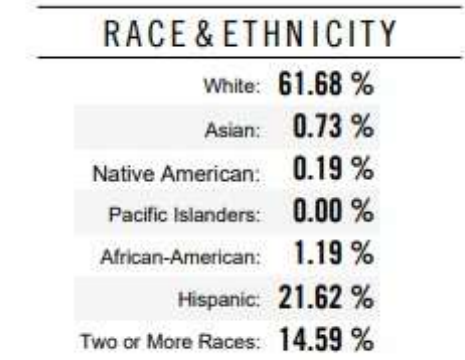
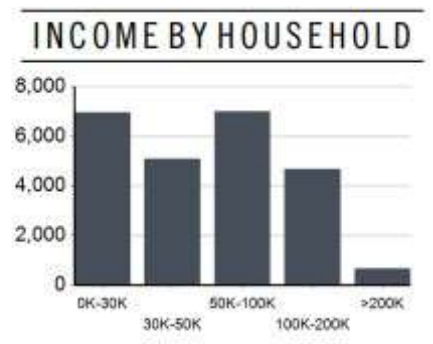
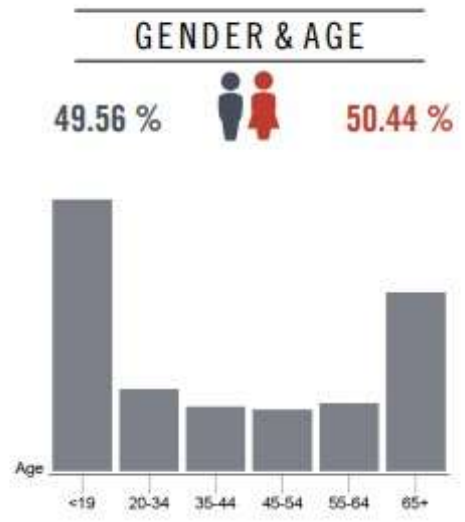
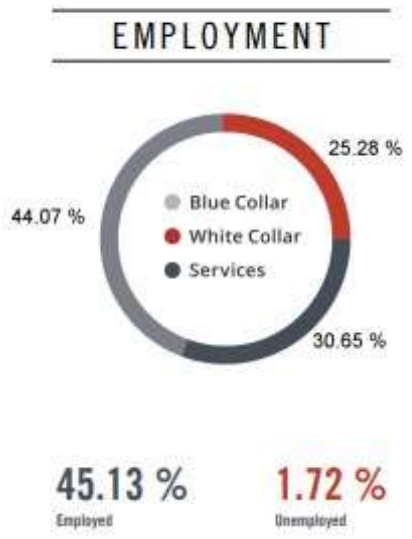
AVG. HHSIZE
2.55

MEDIAN HH INCOME
\$62,759

HOME OWNERSHIP

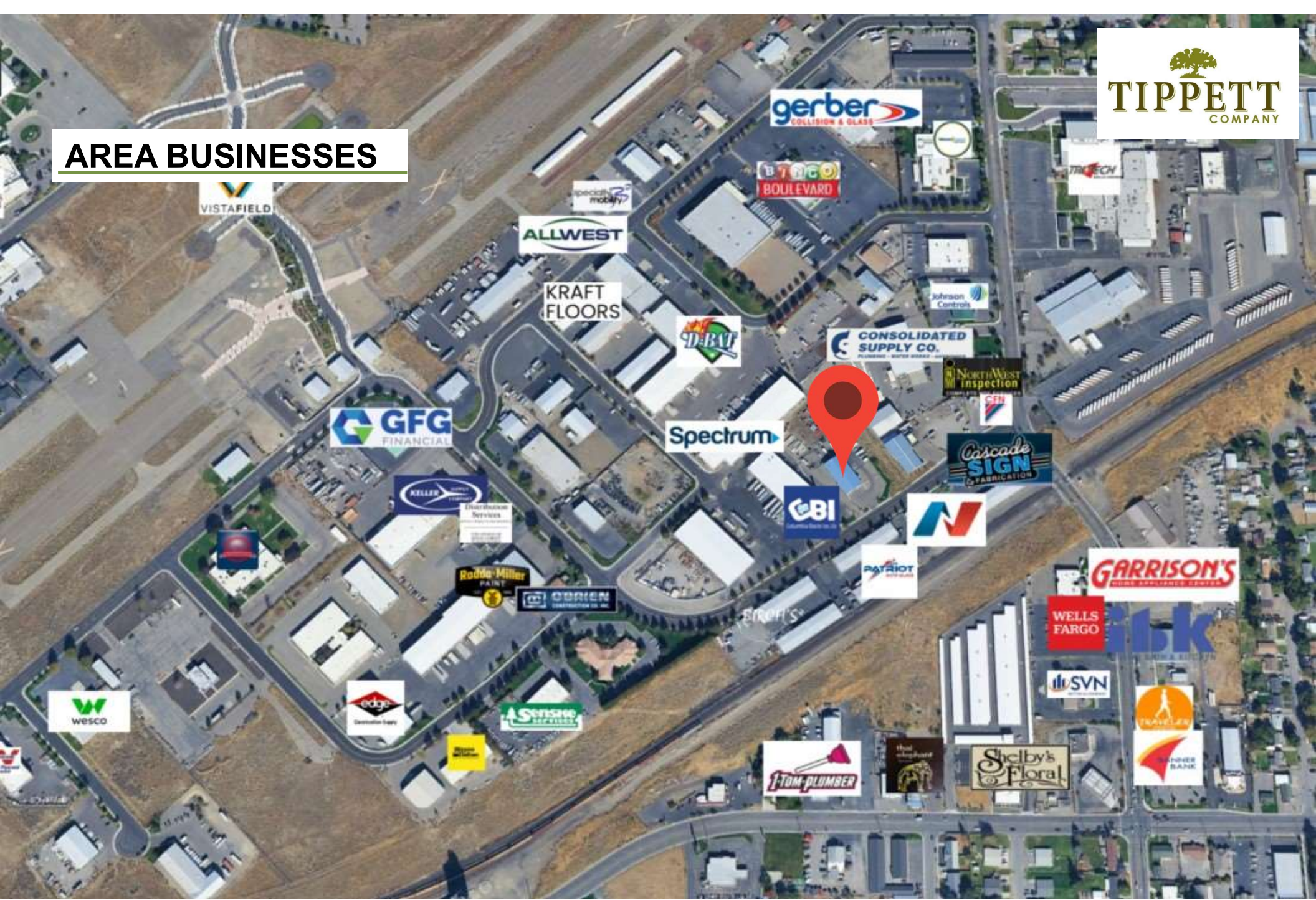
Renters: **9,385**

Owners: **13,668**



No warranty or representation, expressed or implied, is made as to the accuracy of information contained herein, and same is submitted subject to errors, omission, change of price, rental or other conditions and withdrawal without notice. Purchaser and his/her agent are responsible for independently verifying all presented information.

AREA BUSINESSES



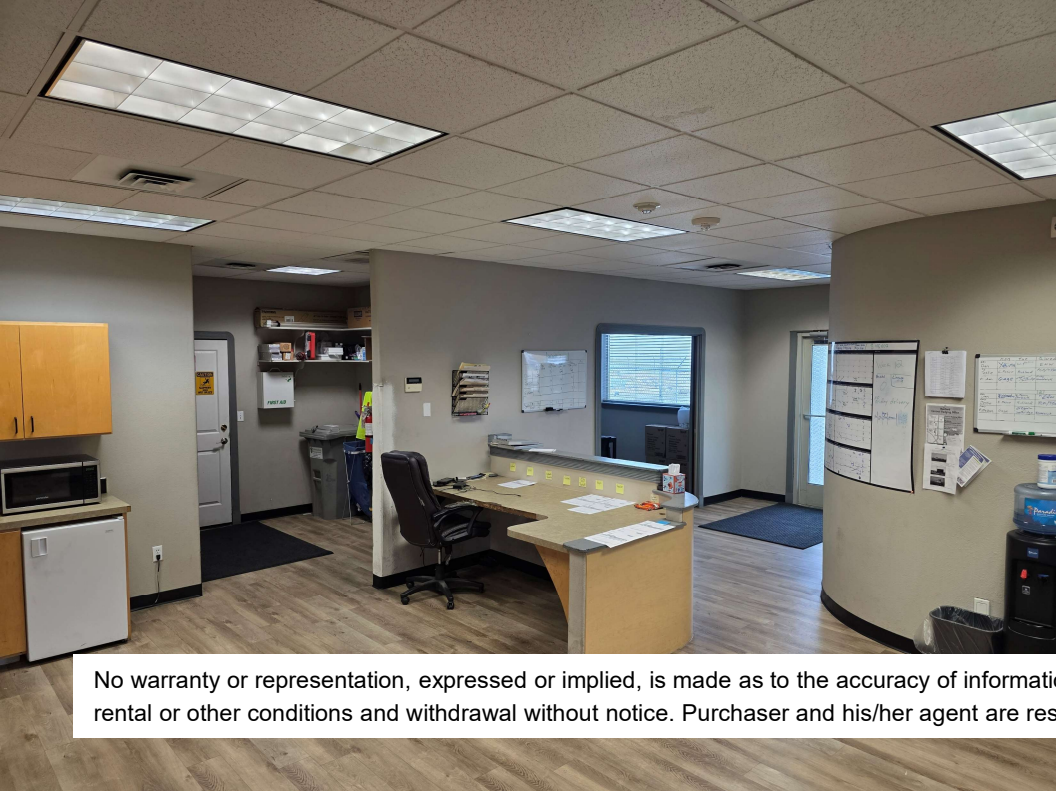
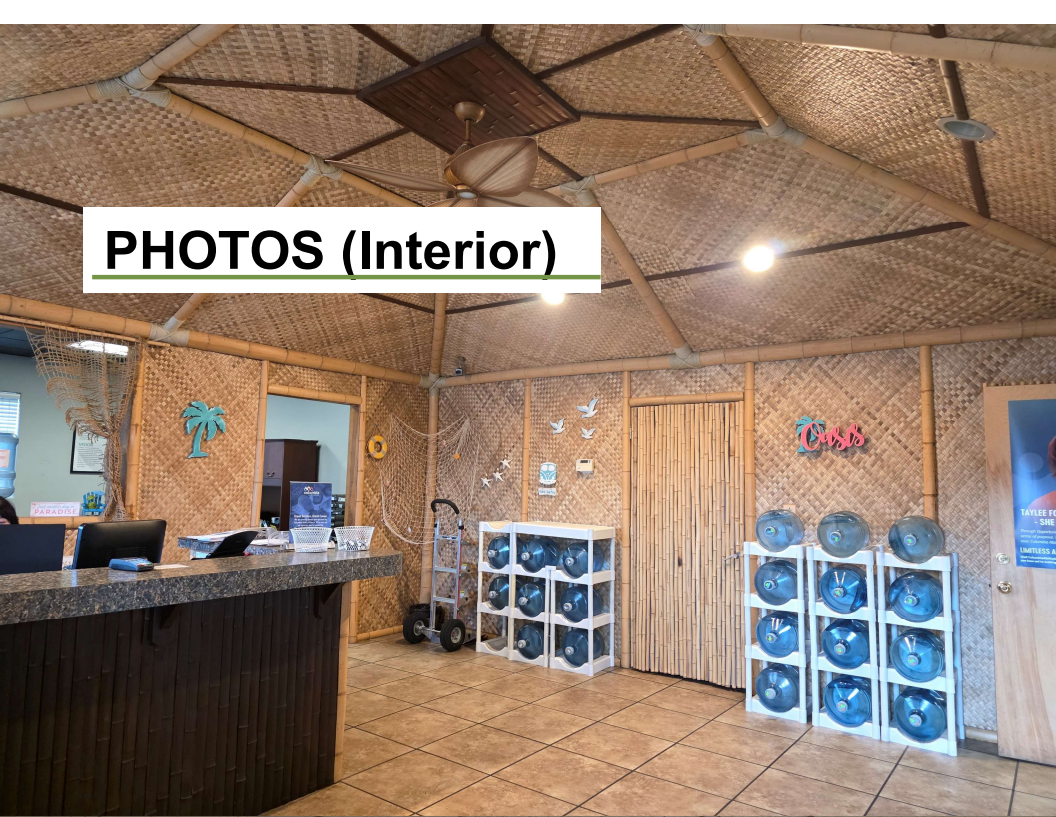
No warranty or representation, expressed or implied, is made as to the accuracy of information contained herein, and same is submitted subject to errors, omission, change of price, rental or other conditions and withdrawal without notice. Purchaser and his/her agent are responsible for independently verifying all presented information.

PHOTOS (Exterior)



No warranty or representation, expressed or implied, is made as to the accuracy of information contained herein, and same is submitted subject to errors, omission, change of price, rental or other conditions and withdrawal without notice. Purchaser and his/her agent are responsible for independently verifying all presented information.

PHOTOS (Interior)



No warranty or representation, expressed or implied, is made as to the accuracy of information contained herein, and same is submitted subject to errors, omission, change of price, rental or other conditions and withdrawal without notice. Purchaser and his/her agent are responsible for independently verifying all presented information.

PHOTOS (Interior cont.)



No warranty or representation, expressed or implied, is made as to the accuracy of information contained herein, and same is submitted subject to errors, omission, change of price, rental or other conditions and withdrawal without notice. Purchaser and his/her agent are responsible for independently verifying all presented information.

PHOTOS (Interior cont.)



No warranty or representation, expressed or implied, is made as to the accuracy of information contained herein, and same is submitted subject to errors, omission, change of price, rental or other conditions and withdrawal without notice. Purchaser and his/her agent are responsible for independently verifying all presented information.

PHOTOS (Operations Equipment)



No warranty or representation, expressed or implied, is made as to the accuracy of information contained herein, and same is submitted subject to errors, omission, change of price, rental or other conditions and withdrawal without notice. Purchaser and his/her agent are responsible for independently verifying all presented information.

PHOTOS (Operations Equipment cont.)



No warranty or representation, expressed or implied, is made as to the accuracy of information contained herein, and same is submitted subject to errors, omission, change of price, rental or other conditions and withdrawal without notice. Purchaser and his/her agent are responsible for independently verifying all presented information.