



8101 W Grandridge Blvd, Suite 120-A

Kennewick, WA
MLS #273451

Contact

Kirt Shaffer | 509.521.9183
kirt@tippettcompany.com

ZONING

CR-L (Commercial Regional)

UTILITIES

Power: Benton PUD
 Water: City of Kennewick
 Sewer: City of Kennewick





TAX PARCEL

131994013034011

BUILDING INFORMATION

Owner: GR 1, LLC
 Year Built: 2019
 Total Building SF: 19,600

Demographics (Kennewick)

	Grandridge Blvd	ADT ±6,900
	Retail Sales per capita	\$23,392
	Population (as of April 1, 2020)	±84,000
	Median Household income	\$64,053

LINKS

Municipal
<https://www.go2kennewick.com/>
<https://www.co.benton.wa.us/>

Economic Development
<https://portofbenton.com/>
<https://www.tridec.org/>

AERIAL VIEW



No warranty or representation, expressed or implied, is made as to the accuracy of information contained herein, and same is submitted subject to errors, omission, change of price, rental or other conditions and withdrawal without notice. Purchaser and his/her agent are responsible for independently verifying all presented information.

AREA BUSINESSES



No warranty or representation, expressed or implied, is made as to the accuracy of information contained herein, and same is submitted subject to errors, omission, change of price, rental or other conditions and withdrawal without notice. Purchaser and his/her agent are responsible for independently verifying all presented information.

West Richland

LOCATION

Richland

SOUTH
RICHLAND

West Pasco

Pasco

Kennewick

Badger

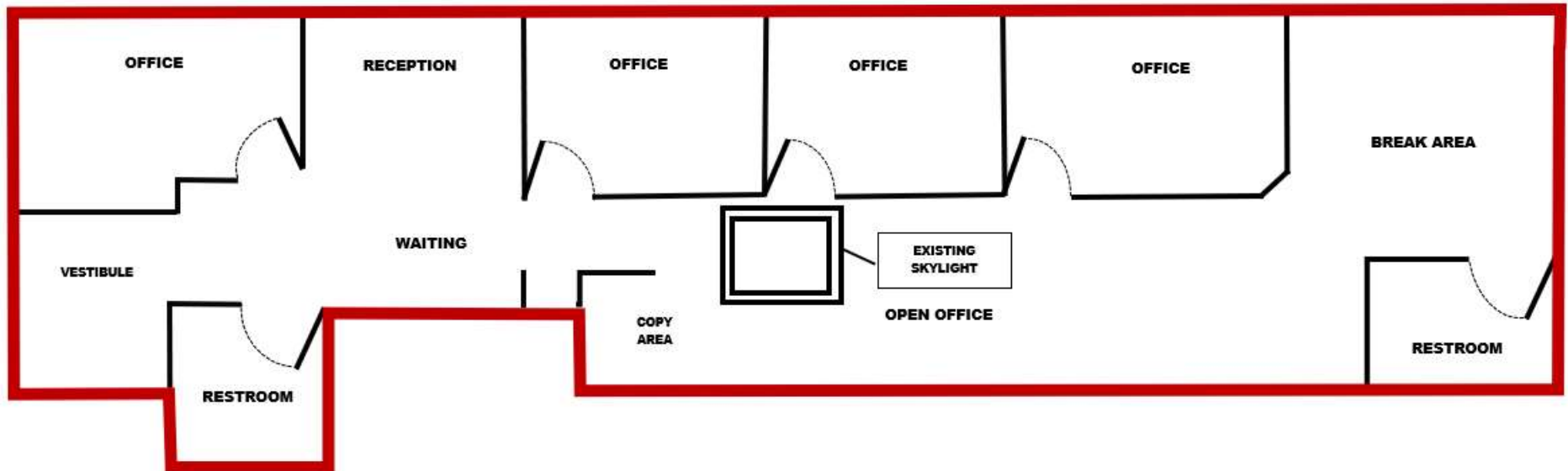
Burbank

Finley

Highland

No warranty or representation, expressed or implied, is made as to the accuracy of information contained herein, and same is submitted subject to errors, omission, change of price, rental or other conditions and withdrawal without notice. Purchaser and his/her agent are responsible for independently verifying all presented information.

FLOOR PLAN



PHOTOS



on contained herein, and same is submitted subject to errors, omission, change of price, responsible for independently verifying all presented information.