

TBD East Superior St

Pasco WA | Franklin County
MLS #255540, #255826 and #255827

Contact

Kirt Shaffer | 509.521.9183
kirt@tippettcompany.com

SUMMARY

This offering is for a build-to-suit shop/warehouse. The space options are 6,000/SF, 12,000/SF, and 24,000/SF including office and warehouse space. The estimated delivery time for the building would be nine to ten months from the execution of a lease.

ZONING

C-3 General Business District

TAX PARCEL NOS. + LOT SIZE

Lot	113-474-018	1.19 AC 51,836 SF
Lot	113-474-027	2.36 AC 102,802 SF

FOR LEASE

Warehouse	\$0.74/SF/MO
Office	\$1.35/SF/MO
NNN	\$0.10/SF/MO

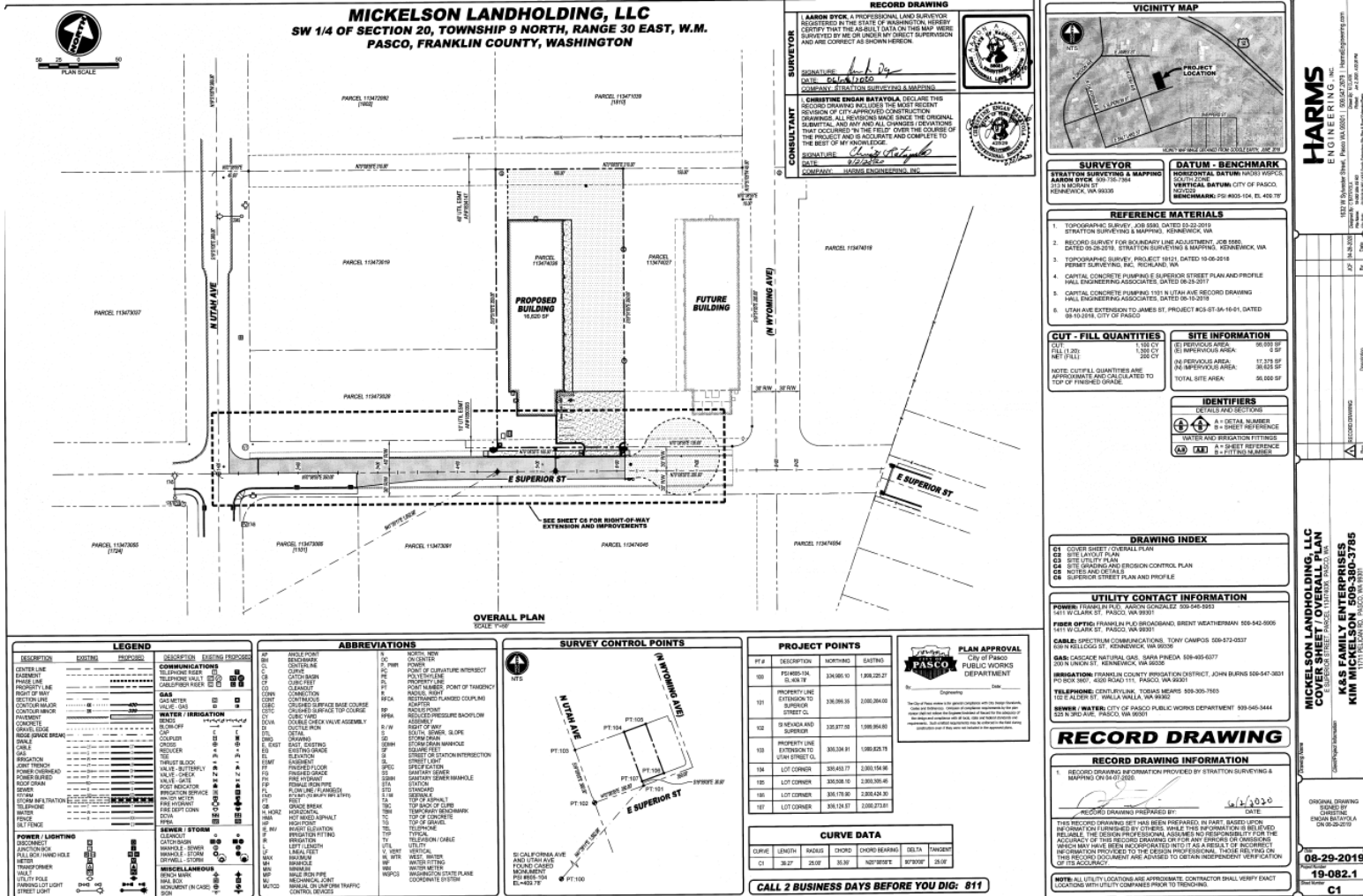
ADDRESS

TBD E Superior Street, Pasco WA

CONTACT

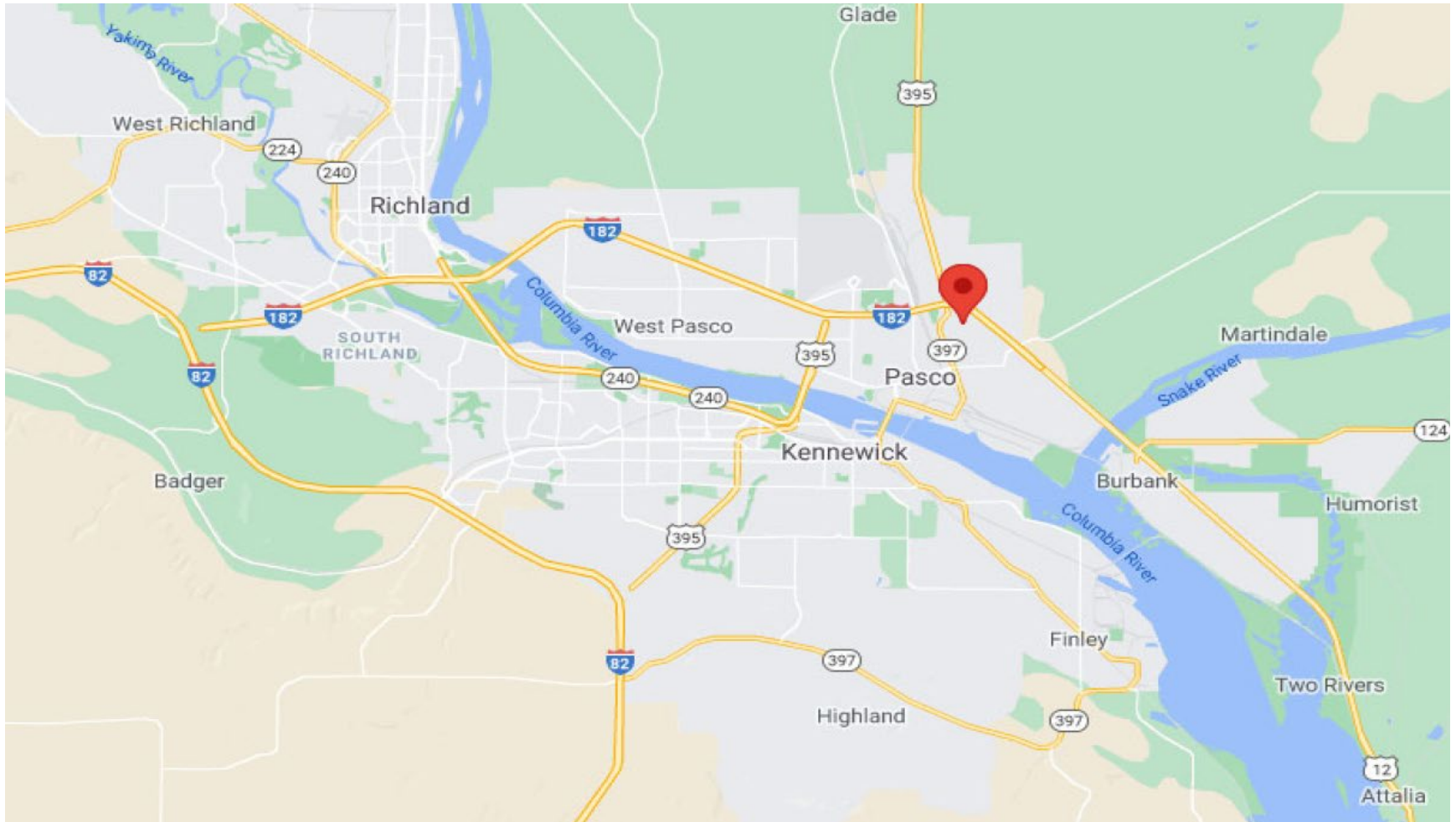
Office 509.545.3355
2815 St, Andrews Loop, Suite F
Pasco, WA 99301

SITE PLAN



No warranty or representation, expressed or implied, is made as to the accuracy of information contained herein, and same is submitted subject to errors, omission, change of price, rental or other conditions and withdrawal without notice. Purchaser and his/her agent are responsible for independently verifying all presented information.

LOCATION MAP



No warranty or representation, expressed or implied, is made as to the accuracy of information contained herein, and same is submitted subject to errors, omission, change of price, rental or other conditions and withdrawal without notice. Purchaser and his/her agent are responsible for independently verifying all presented information.

AERIAL VIEW



No warranty or representation, expressed or implied, is made as to the accuracy of information contained herein, and same is submitted subject to errors, omission, change of price, rental or other conditions and withdrawal without notice. Purchaser and his/her agent are responsible for independently verifying all presented information.